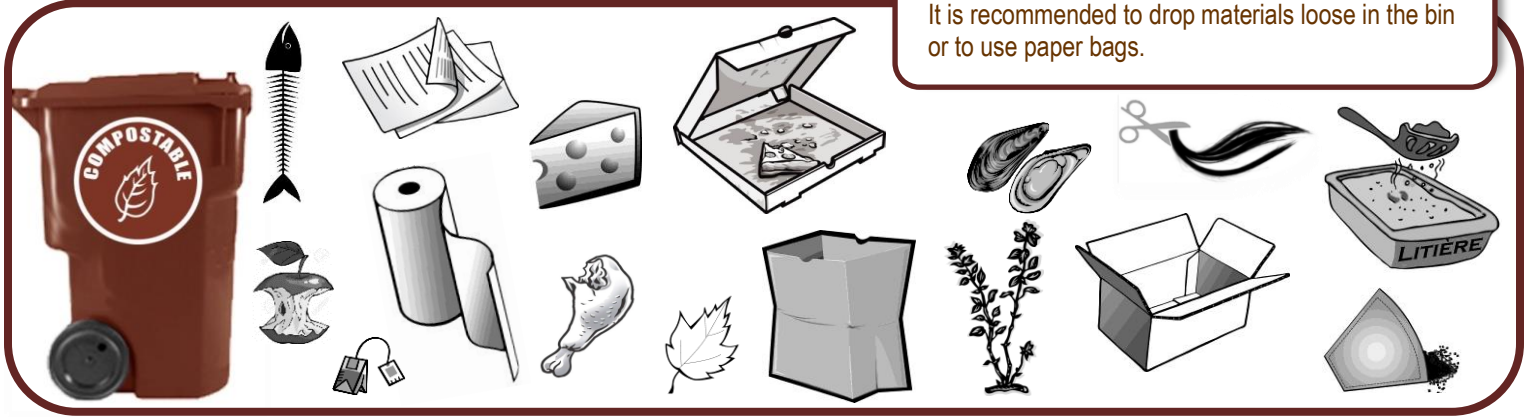


# 2022 Waste sorting guide Îles-de-la-Madeleine

## In my compost bin (brown bin)

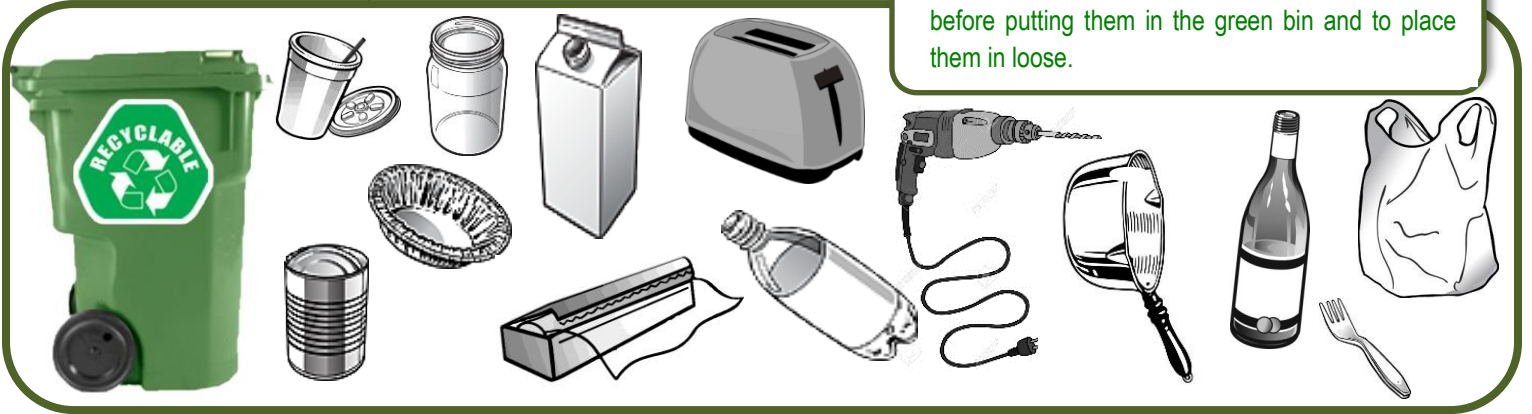
Table leftovers, plants, fibers



**IMPORTANT!**  
It is recommended to drop materials loose in the bin or to use paper bags.

## In my recycling (green bin)

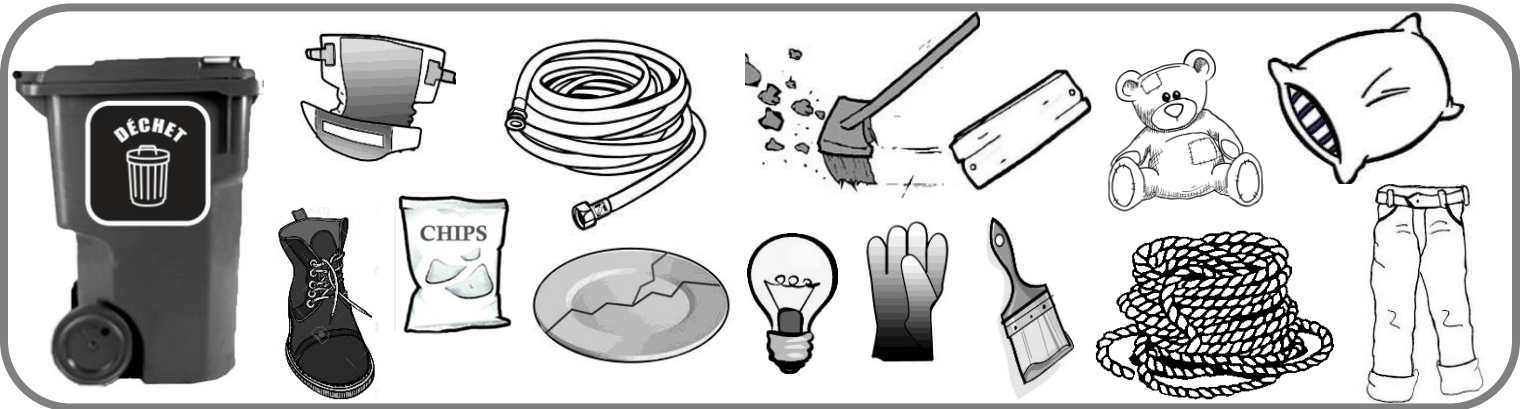
Glass, metals, plastics (hard and soft) and  
Tetra Pak containers (juice, milk)



It is recommended to lightly rinse these materials before putting them in the green bin and to place them in loose.

## In my garbage bin (black bin, blue, etc.)

Non-recyclable materials, broken window, dishes and other waste



At the Waste Management Center, to the transfer points and other places for that purpose.



**Before bringing those materials** or other products that cannot be put in the rolling bins, it is preferable **to check first with the Waste Management Center** by dialing 418 986-3100, extension 192.

### GREAT HABITS TO KEEP

- ✓ Avoid buying highly wrapped products
- ✓ Buy durable and reusable products rather than disposable or inferior quality ones
- ✓ Buy products in bulk as much as possible
- ✓ Bring your reusable grocery bags to reduce the use of plastic bags



The best waste is the one we don't produce!